



กรมควบคุมโรค
Department of Disease Control

State of HIV Epidemic in Thailand in 2019

Overall Situation
As of the end of 2019
(National HIV and AIDS estimates)



People living with HIV (PLHIV) 471,061

- Child (< 15 years): 3,342
- Adult (≥ 15 years): 467,719
- Women: 208,263
- Men: 262,798



New HIV cases
5,446 cases/year

- Child (< 15 years): 66
- Adult (≥ 15 years): 5,380
- Women: 1,635
- Men: 3,811

Mother-to-child HIV transmission rate
1.97%



HIV-related deaths
13,937 cases/year

- Child (< 15 years): 160
- Adult (≥ 15 years): 13,777
- Women: 6,489
- Men: 7,448

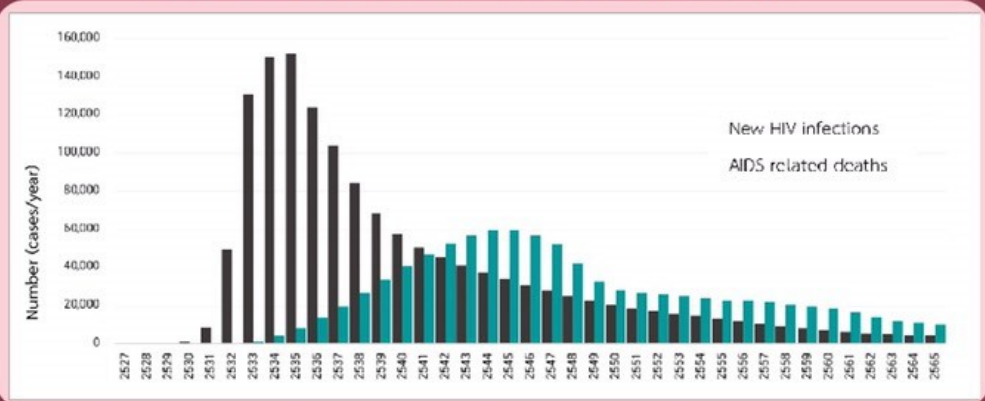


Discriminatory attitudes toward People living with HIV

58.6%

A national survey conducted in 2014

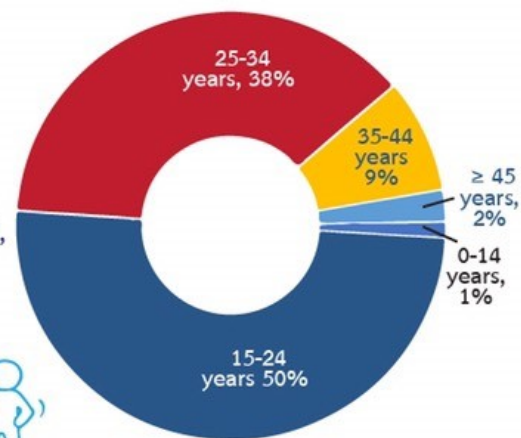
Estimation of the HIV/AIDS epidemic



50% of new HIV cases are in 10 provinces including
Bangkok, Chonburi, Nonthaburi, Khon Kaen, Chiang Mai, Pathum Thani, Samut Prakan, Nakorn Rachasima, Chiang Rai, Pitsanuloke

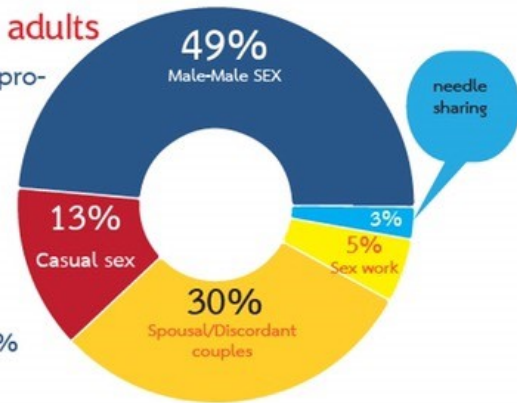


New HIV cases by age groups



Mode of HIV transmission among adults

- 97% of new infections are caused by unprotected sex among
 - Male to male sex: 49%
 - Sex work: 5%
 - Casual sex and non-marital sex partners: 13%
 - Spousal/Discordant couples (living together/regular partners): 30%
- 3% infected from needle sharing



Results of the HIV sentinel surveillance

Population-based surveillance	Prevalence (%)	Year
Woman attending antenatal clinics (ANC)	0.4%	2019
Male conscripts	0.6%	2018
Men who have sex with men (MSM)	11.9%	2018
Transgender woman (TGW)	11%	2018
Male sex workers (MSW)	3.8%	2018
Female sex workers (FSW)	0.7%	2018
People who inject drugs (PWID)	20.5%	2014

Source: Division of Epidemiology and report of HSS, Division of Epidemiology, DDC Thailand





Thailand's progress towards ending AIDS in 2019

HIV prevention

Condom use among young people during their last sexual intercourse (with all types of sex partners) were

- 81.7% among young male
- 78.9% among young female

6,985 people received oral pre-exposure prophylaxis (PrEP) to prevent the acquisition of HIV infection.

97.2% of pregnant women living with HIV received antiretroviral treatments to prevent mother-to-child transmission of HIV.

Coverage of HIV and STD prevention outreach services among key affected populations

Key populations	Number of reached	coverage (%)
MSM	104,591	66.3%
TGW	12,273	19.6%
MSW	7,935	30.1%
FSW	34,868	27%
PWID	10,431	24.5%

*coverage among the estimated number of key populations

HIV care and treatment



1,240,680 people received HIV-testing and know the results, of whom 152,851 were the key affected populations.

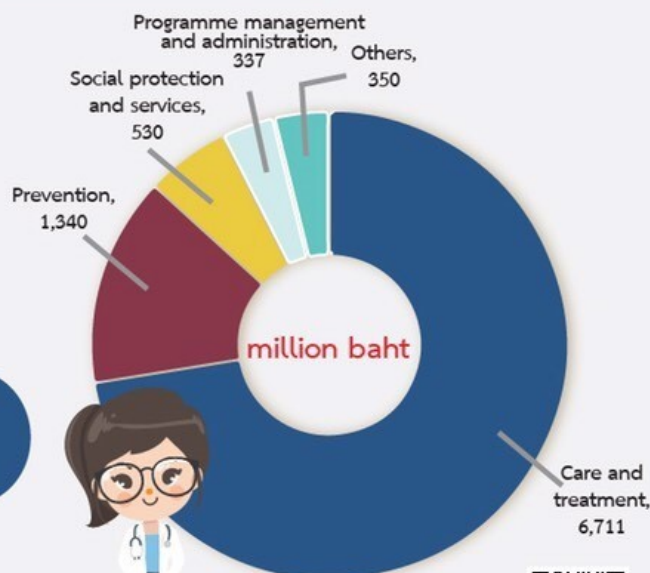
99% of PLHIV knew their status.

80% of PLHIV who knew their status received antiretroviral treatment.

97% of PLHIV received ART and were virally suppressed.

AIDS expenditures in Thailand (2019)

- Thailand had a total AIDS expenditure of 9.2 billion baht in 2019.
- 92% of all AIDS expenditures are from the domestic budget.
- 13% of the AIDS budget was for HIV prevention.
- Expenditure of prevention among the key affected populations was 240 million baht, accounting for 18% of total prevention expenditures.



For additional information, please visit hivhub.ddc.moph.go.th

Telephone: 0 2590 3828

Provided by Division of AIDS and STIs, DDC, MoPH

